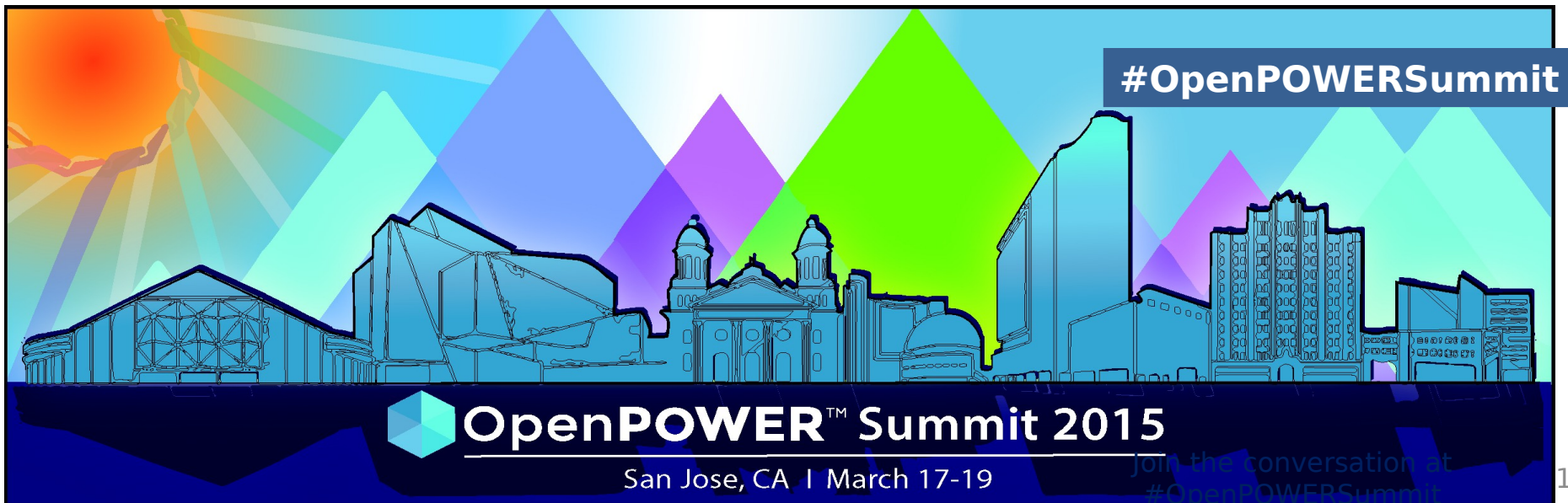




Accessing Linux on Power

Loc Thai, Power Cloud Program Director
IBM Systems Business Unit



No-Cost Access to Linux on Power for IBM Business Partners and Open Source Developers



Venue	ISV	OS D	OS	How to access	Server size & access duration
PDP - Power Development Platform (Cloud)	P	P	Ubuntu RHEL SLES	Intended for IBM PartnerWorld Members and Open Source Developers (beta) Virtual Machines for porting and testing Offering Overview: ibm.com/partnerworld/pdp Request access: ibm.com/partnerworld/wps/ent/pdp/web/MyProgramAccess Send a note to pdpspt@us.ibm.com if questions or issues	VM Size: 1-2 vCPU, 2-4GB RAM, 35GB disk Duration: 2 weeks+ Longer when sponsored
IIC - IBM Innovation Center	P	S	Ubuntu RHEL SLES	Intended for ISVs and Systems Integrators For porting, integration and performance testing One-on-one engagement. Multiple and large systems possible Request access: ibm.com/partnerworld/iic	VM or bare metal, Hypervisor access, IBM Storage (e.g. Flash, Spectrom) Duration: 2 weeks+
OSU Open Source Lab	N	P	Ubuntu Fedora	Intended for Universities, Researchers, Open Source Developers IBM Linux Technology Center sponsored projects Request access: www.ibm.com/partnerworld/requestthe	VM Size: 1-8 CPU, 2-16GB RAM, 20-120GB disk Duration: 1 day to indefinite

ISV=Independent Software Vendor OSD=Open Source Developer P=Primary S=Secondary





Current Fee Based or Sponsored Access to Linux on Power

Venue	OS	How to access	Server size & access duration
Site Ox	Ubuntu	Intended for anyone Virtual Machine rental for porting and testing Request access: www.siteox.com/lop	1 cpu, 2GB, 20GB Storage \$2/day, \$32/month 2-week free trial
OVH	Ubuntu Fedora	Intended for anyone Request access: cloud.runabove.com/signup/?launch=power8	S=8 threads, 4GB RAM, 10GB RAID \$0.05/hour, capped at \$32/month 2XL=178 threads, 48GB, 480GB RAID \$1.08/hour, capped at \$700/month
Center Express	Ubuntu RHEL SLES	Intended for China users only with sponsor by an IBMer Virtual Machine access for porting and testing Request access: https://w3-31.ibm.com/support/techline/gcg/tssapp/csceexpress/	1 st 2 weeks free. Thereafter needs business justification.
Client Centers	Ubuntu RHEL SLES	Intended for IBM Customers One-on-one engagement. Multiple and large systems possible Requires an IBM sponsor (i.e. Request form is available inside IBM only) Request access: http://d27db001.rchland.ibm.com/b_dir/bcdcweb.nsf/mywork?OpenForm Send a note to PPSBENCH@us.ibm.com if questions or issues	VM or bare metal, Hypervisor access, IBM Storage (e.g. Flash, Spectrom) Duration: 2weeks+, defined by projects Fee paid by Sales team or Clients
Lease & Discount	Ubuntu RHEL SLES	Intended for IBM PartnerWorld Developers Request access: ibm.com/partnerworld/wps/servlet/ContentHandler/isv/	Physical systems Up to 50% discount on hardware and significant

PDP 2.0 beta - Power Innovation Lab for CAMSS Solutions

Goal: To accelerate innovation and the development of the Power Cloud ecosystem by providing an incubation environment for Cloud infrastructure and solution development on Power.

Power Innovation Cloud

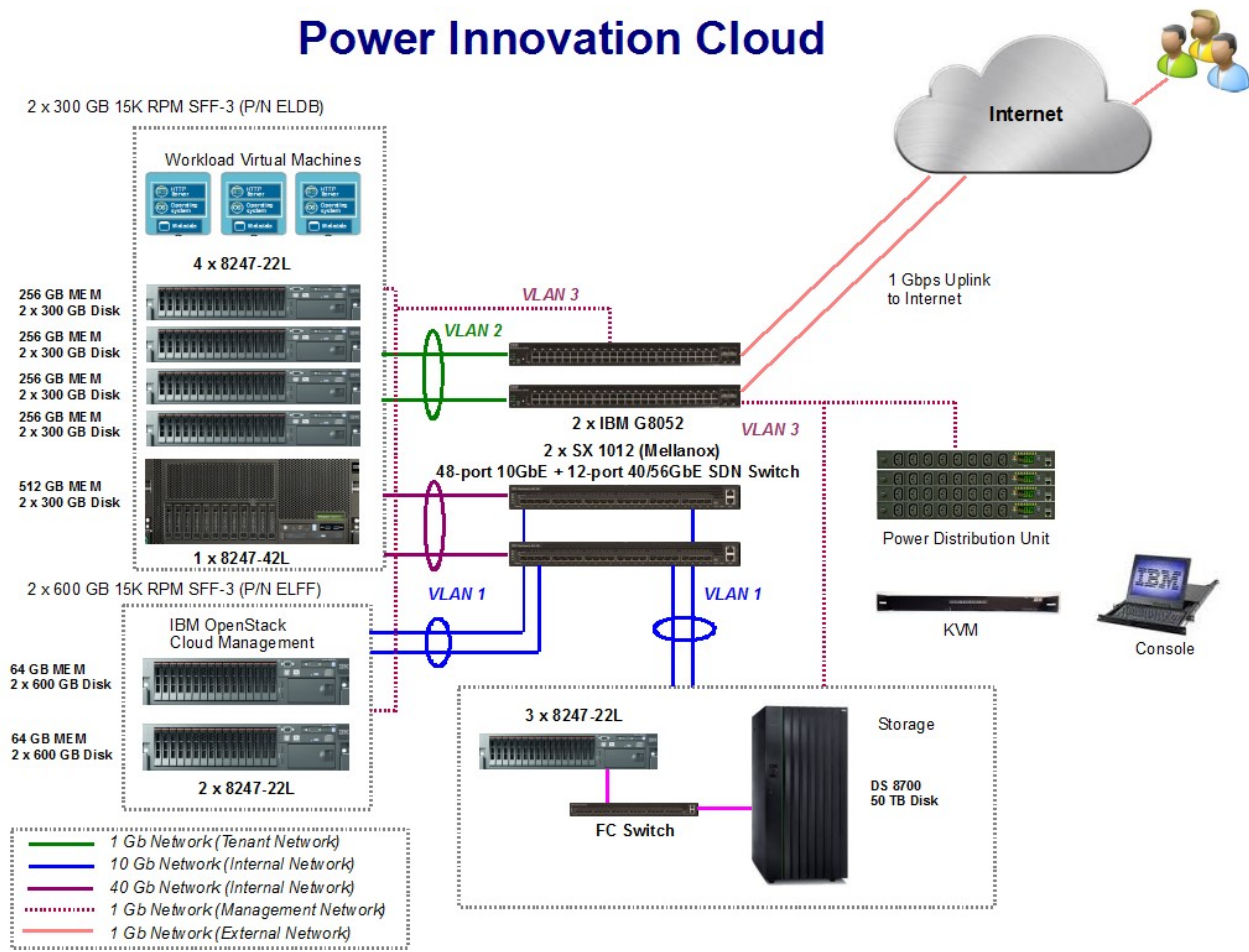
Infrastructure:

40 Servers (some with Mellanox fabric) are hosted in POK as an extension of PDP (PDP 2.0)



IBM Developers | ISV & OpenSrc Developers

OpenPower Cloud Early Adopters





PIC Project Nomination Form

Name of Project	
Project Lead(s)	
IBM Sponsor / Stakeholder	
Description of what will be tested	
List the deliverables that will result from this engagement	
What is the success criteria	
Will results be made available to Open Source community? If yes, when?	
Operating System	
Can it run fully virtualized	
# of CPUs	
Amount of memory	
Disk space	
Please answer each question with as much detail as possible and return to Linda Alkire (lnalkire@us.ibm.com)	
Network connectivity	
Target date to get access to system(s)	
Test/validation duration (in weeks)	